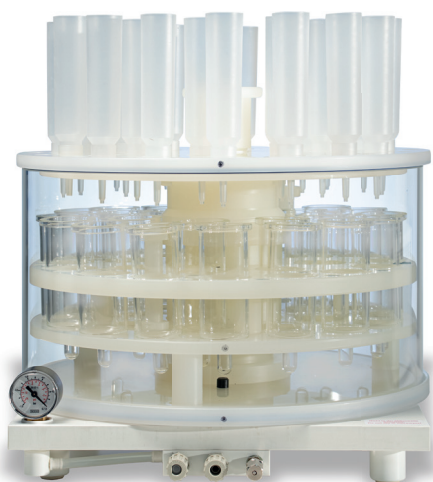


# FAST AND EFFICIENT FILTRATION PROCESS

FOR ENVIRONMENTAL APPLICATIONS



## SFS-24 SIMULTANEOUS FILTRATION SYSTEM



---

SIMULTANEOUS FILTRATION

---

UP TO 24 SAMPLES

---

COMPACT & ERGONOMIC DESIGN

---

COMPLEMENTARY TO SOLVENT  
EXTRACTION AND ACID DIGESTION

---



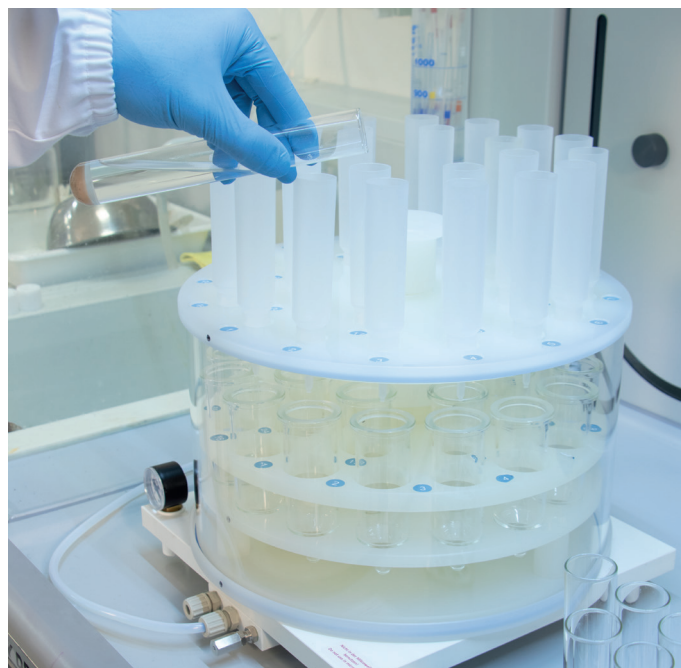
**MILESTONE**  
H E L P I N G  
C H E M I S T S

# A FILTRATION SYSTEM TO SIMPLIFY & EXPEDITE YOUR DAILY WORK

The analysis of organic pollutants and metals in environmental matrices, such as soils and sediments, often includes the filtration step, either after a solvent extraction process or a leaching type acid digestion. The conventional approach to filtration involves old-style apparatus that reduce the lab workflow and occupies valued space in the fume hood. The Simultaneous Filtration System (SFS-24) by Milestone overcome these limitations, improving the lab's productivity and reducing the fume hood space requirement. The SFS has up to 24 positions and uses the inexpensive Milestone funnels, compatible with all commonly used solvents and mineral acids. This setup is combined with the vacuum pump and the pressure manometer to accelerate and control the process, leading to an easier and faster filtration approach.

## | SFS-24 PROCEDURE

The filtration procedure counts a single step: the transfer of the solution into the Milestone funnel. The large volume (50 mL) of the funnel enables to accommodate the whole solution, the reagent used for rinsing and the drying agent, required for organic pollutants analysis. In few minutes, up to 24 solutions are filtered simultaneously and the solutions are collected into standard evaporation or volumetric flasks, ready for the following analytical step. The smart design of the SFS-24 dramatically reduces the occupied space in the fume hood and its unique rotating mechanism allows easy access to all positions, simplifying the handling and enhancing the lab workflow. The SFS-24 in combination with Milestone ETHOS systems, provides superior utility to environmental laboratories.



*Filtration of soils samples  
after microwave solvent extraction*

---

24 SAMPLES IN FEW MINUTES

---

HIGHER PRODUCTIVITY

---

BETTER WORKFLOW

---

COMPLEMENTARY TO ALL ETHOS

---

CAT398EN-001 • 2020-03



MILESTONE Srl - Via Fatebenefratelli, 1/5 - 24010 Sorisole (BG) - Italy  
Tel: +39 035 573857 - Fax: +39 035 575498  
www.milestone-srl.com - email: analytical@milestone-srl.com

MILESTONE INC. - 25 Controls Drive - Shelton, CT 06484 - USA  
Tel: (203) 925-4240 - Toll-free: (866) 995-5100 - Fax: (203) 925-4241  
www.milestone-sci.com - email: mwave@milestone-sci.com

MILESTONE GENERAL K.K. - KSP, 3-2-1, Sakado - Takatsu-Ku,  
Kawasaki 213-0012 - Japan - Tel: +81 (0)44 850 3811 - Fax: +81 (0)44 819 3036  
www.milestone-general.com - email: info@milestone-general.com

MLS GmbH - Auenweg 37 D-88299 Leutkirch im Allgau - Germany  
Tel: +49 (0)7561 9818-0 - Fax: +49 (0)7561 9818-12  
www.mls-mikrowellen.de - email: mws@mls-mikrowellen.de