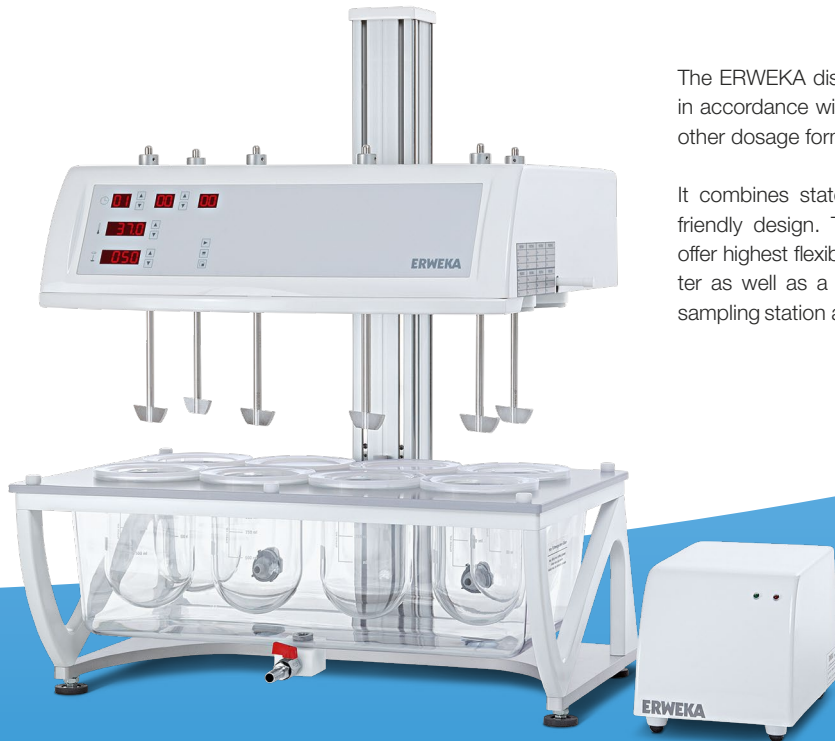


Dissolution Tester DT 720 Series

Dissolution Tester USP Apparatus 1, 2, 5 and 6

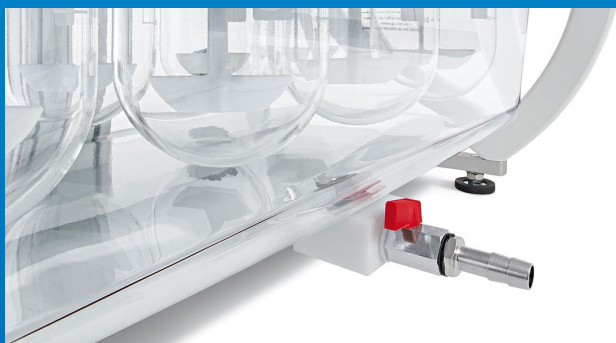


The ERWEKA dissolution tester DT 720 series has been designed in accordance with USP/EP/JP requirements for testing tablet and other dosage forms.

It combines state-of-the-art technology with excellent and user-friendly design. The High-Head and Low-Head operating modes offer highest flexibility. The tester can be used as a stand-alone tester as well as a dissolution system equipped with an automated sampling station and operated via the ERWEKA Disso.net software.

DT 720 Highlights:

- Dissolution tester with 6, 7 or 8 test stations.
- Can be operated either in High-Head or Low-Head position of the drive heads.
- In Low-Head mode the vessels are sealed to offer the lowest possible evaporation with V-shaped vessel covers.
- Easy and fast lifting of the drive head by manual lifter with gas strut support.
- 3 different locking positions for High-Head, Low-Head or cleaning position of test head.
- Drop magazines operated manually, simultaneously or staggered.
- Superior one-piece moulded water bath made of PET, non-leaking, easy to clean with outlet valve.
- Easy programming using symbol keypad.
- External flow-through heater to reduce influence of vibrations.
- Optimal access to vessels and bath for easy cleaning.
- USP compliant sample withdrawal.
- Non-corrosive design using plastics, alloys and fluoro-polymers.

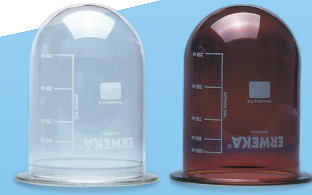


One-piece moulded PET water bath with outlet valve



Easy to clean without moving the bath

DT 720 Series



Specifications

Dissolution tester for USP methods 1 (basket), 2 (paddle), 5 (paddle- over- disk) and 6 (rotating cylinder) with 6, 7 or 8 test stations (726, 727, 728)

100% USP/EP/JP compliant

Fulfills all specifications in accordance with FDA "Mechanical Calibration"

LE display for each test parameter with up/down buttons

Evaporation less than 1% (50 rpm / 1000 ml / 37 °C / 24 h)

Lifter column with gas strut support for effortless lifting and lowering of the drive head

Automatic vessel centring via centring rings

External high-power heater, heating range: 30 - 50 °C, even distribution of temperature

Wobble less than 0.2 mm (paddles)

Standard manual tablet drop magazine for 8 samples

Height adjustment feet for quick levelling

RS 232 interface for PC connection, USB-B interface for firmware updates

Dimensions: 830 mm (width incl. heater) / 640 mm (depth) / 940 mm (height) / 47 kg (weight)

Options

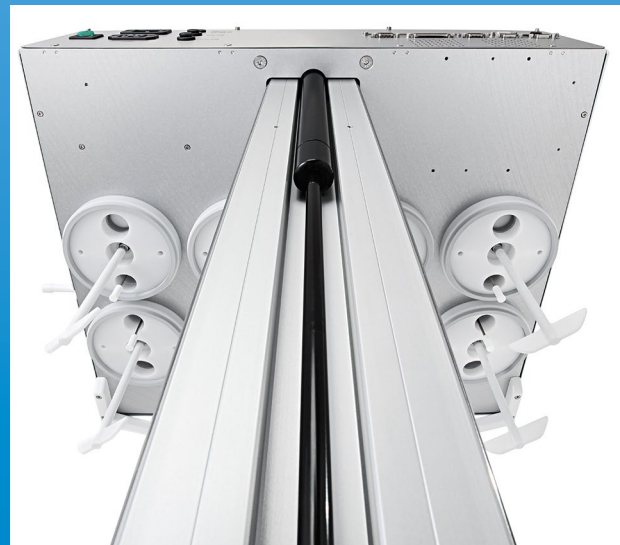
- + External PT 100 temperature sensor for water bath or media temperature display
- + Automatic tablet drop with control of temperature tolerance (USP)
- + USB-A printer interface for documentation of test run parameters (time, date, rpm, temperatures etc.)
- + Low evaporation vessel cover for High-Head operation
- + External cooling device with autonomous operation
- + Video monitoring/recording of dissolution test in time lapse mode
- + Vessels 1000 ml, 2000 ml, glass or amber glass (UV protected), 250 ml mini glass vessels
- + Paddles, baskets, discs for paddle-over-disc, rotating cylinders, enhancer cell, intrinsic dissolution, felodipine baskets, suppository baskets, extraction cell
- + Dissolution qualification tool kit
- + Upgrade to work as online dissolution system
- + USP compliant automated sampling station with automatic height adjustment of sampling points
- + IQ/OQ/PV documents, IQ/OQ/PV service
- + Maintenance service



DT 728 in Low-Head mode to minimise evaporation



Membrane sealed sampling - manual or automated with added sampling station



Effortless lifting and lowering of the drive head with gas strut support

Technical specifications for the products described are stated without warranty and subject to change at any time without further notice. v.1.1.3.16.

ERWEKA GmbH
sales@erweka.com
+49 6104 6903-0

Ottostr. 20 - 22
63150 Heusenstamm
Germany

ERWEKA
www.erweka.com